

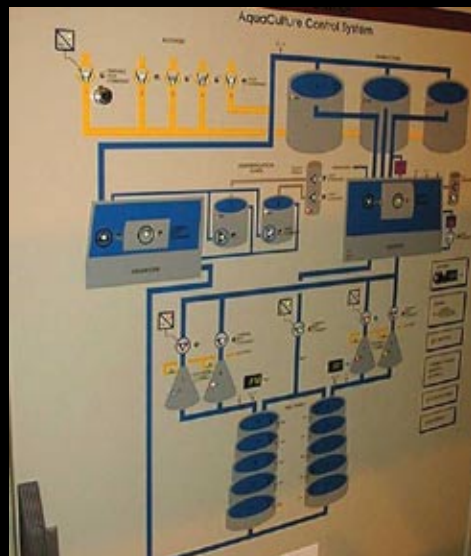
The completely **Automated Fish Farm...**



Cowex has been in charge of the design and projecting of the process technical part of the plant, right from the hydraulics to the feed system.

Furthermore, Cowex has delivered the ACS Aquaculture Control System and switchboards, instrumentation and process equipment (dosing plant, adjusting valves etc.) and construction management, start-up and commissioning.

Today, the customer has an efficient production facility satisfying his legitimate expectations.

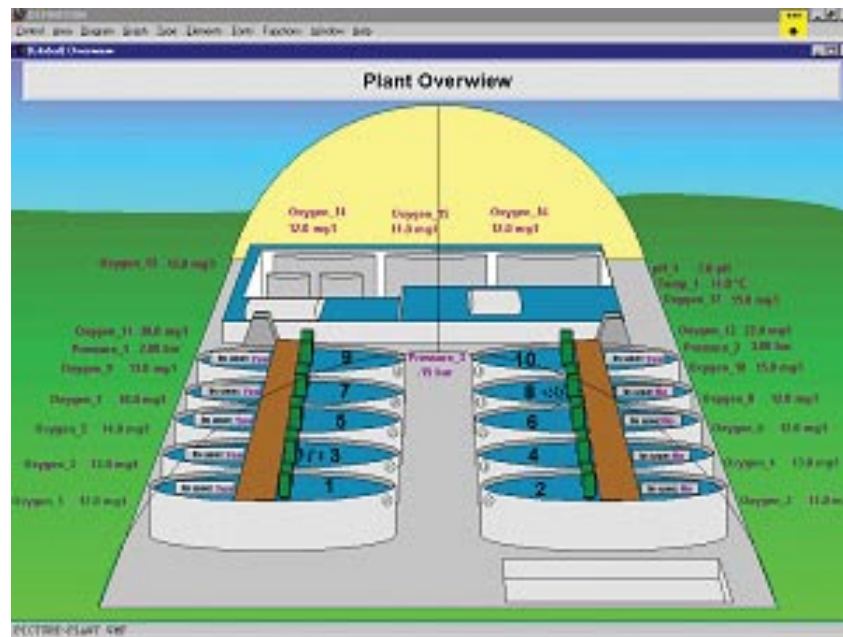


Location: Strathcarron, Scotland
Production: Salmon Smolt, 70 tons
Delivery year: 1998



Smolt production in Scotland

Reference



...including

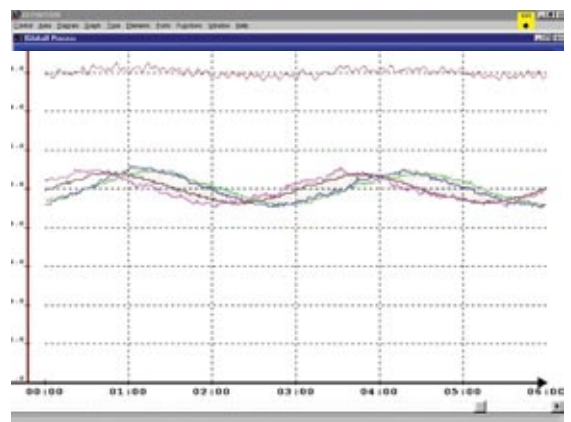
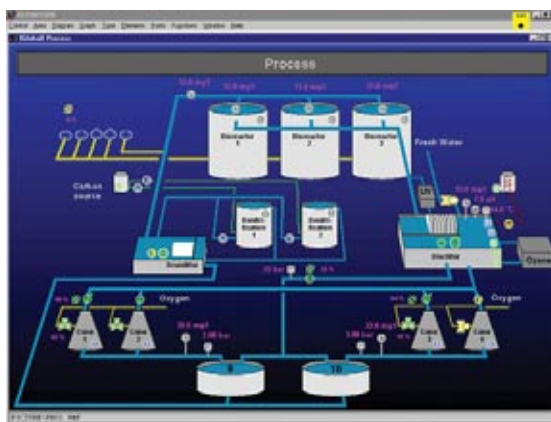
Feeding, Supervision & MES

By means of the very user-friendly ACS Aquaculture Control System it is possible for the operator at any time to enter a given place in the plant and read a given parameter. E.g. the oxygen concentration in a given basin is only a "mouse click" away. It is thus possible for the operator to operate and monitor the whole system from his PC.

The plant is equipped with advanced adjustment of biological functions and growth parameters for salmon smolt.

All data collected by the system is stored automatically so that the operator at any time can enter and get a view of a given process. Besides, the system includes a possibility to show a process as a graph drawing, which is used as documentation of the production.

The plant is equipped with "remote service" meaning that Cowex can assist in the plant operation and service from Denmark. We also have experience in operational optimisation via remote service.



Smolt production in Scotland