

Controlled

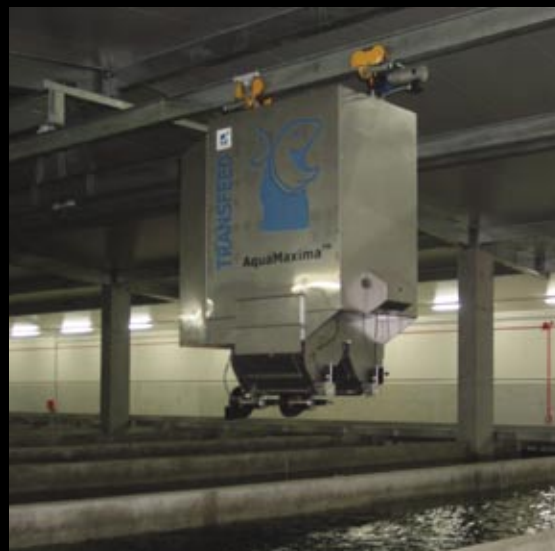
robot feeding in raceways...



Cowex has been in charge of the design, projecting and installation of the TransFeed™ Feeding robot, filling station, electrical control boards, communication, the AquaMaxima™ Production Management system and all required training.

The TransFeed™ feeding robot is delivered with Symmetric Dual Spin for Raceways and is capable of spreading feed pellets (3-13 mm) in an area covering the whole raceway (3 x 20 metres).

The feed distribution includes a feed mixing feature and is better and more even than obtained by hand feeding where the feed is thrown at the surface from one end of the tank.



Location: Parengarenga, New Zealand
Production: Yellowtail Kingfish, 600 tons
Delivery year: 2004



Kingfish production in New Zealand

Reference



...also including

Silos, filling station and MES

Delivery also included 6 Silos each containing around 1000 Litres including filling station and transport flex augers for automatically filling of the TransFeed™ Robot.

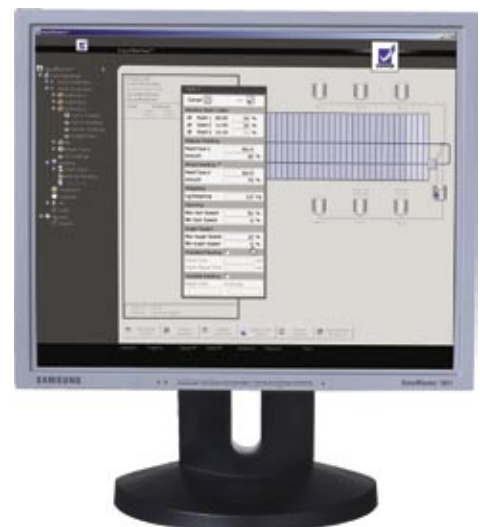
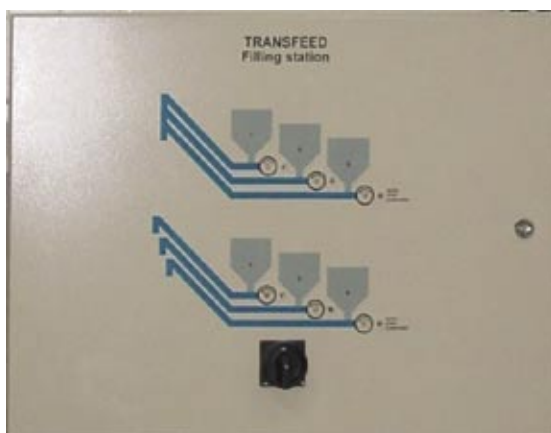
All process parts are supported by an electrical switch board made ready for automatic as well as manual operation mode.

By means of the very user-friendly TransFeed operating software it is very easy to control the feeding of the TransFeed™ robot and to supervise the feeding process in real-time. The operating software for the TransFeed™ robot is fully integrated with the AquaMaxima™ Production Management System.

AquaMaxima™ is a so-called MES-System (Management Execution System) able to perform what you plan and to capture data from the performance.

In this way the amount to be fed can be automatically calculated for each specific tank and that all feeding data are also captured and saved to the AquaMaxima™ production database.

Installed is also "remote service" meaning that Cowex can assist in the plant operation and service from Denmark.



Kingfish production in New Zealand