

The completely **Automated Fish Farm...**



Cowex has been in charge of the design and projecting of the process technical part of the plant, right from electrical installations to the production management software.

Furthermore, Cowex has delivered the TransFeed™ feeding robot, the AquaMaxima™ Production Management system and the AquaMaxima™ Supervision & Alarm system including instrumentation and process

equipment.

The TransFeed™ feeding robot is here designed for filling feeding hoppers that are fixed to the tanks. The feeders handling the feeding are demand feeders.

A sensor attached to the TransFeed Robot measures if the feeding unit shall be filled.



Location: Jutland , Denmark
Production: Eel, 300 tons
Delivery year: 2001



Eel production in Denmark

Reference



...including

Feeding, Supervision & MES

The operating software for the TransFeed™ robot is fully integrated with the AquaMaxima™ Production Management System.

AquaMaxima™ is a so-called MES-System (Management Execution System) able to perform what you plan and to capture data from the performance.

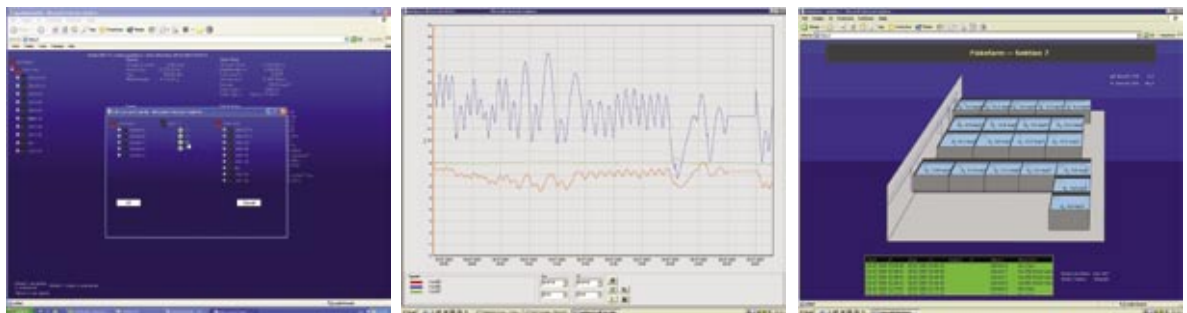
In this way the amount to be fed can be automatically calculated for each specific tank and that all feeding data are also captured and saved to the AquaMaxima™ production database.

The AquaMaxima™ Supervision & Alarm provides online measurements of O₂, pH,

Flow and Temperature. All measurements are easily supervised from the operator station or from the wireless Tablet PC.

All data collected by the system is stored automatically so that the operator at any time can enter and get a view of a given process. Besides, the system includes a possibility to show a process as a graph drawing, which is used as documentation of the production.

The plant is equipped with "remote service" meaning that Cowex can assist in the plant operation and service from Denmark. We also have experience in operational optimisation via remote service.



Eel production in Denmark